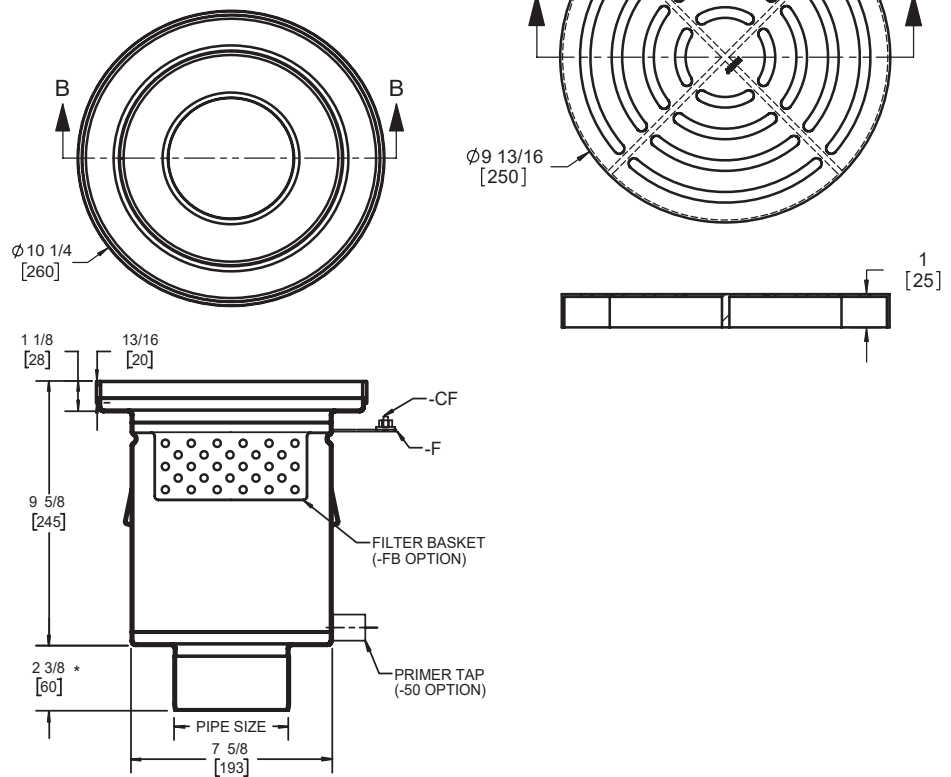


**42550****SS Drain****10" Round Top, 10" Deep****Specification**

Josam series 42550 fabricated stainless steel (type 304), 10" round top, 10" deep, with no-hub bottom outlet, anchor tabs and perforated SS grate (standard).

**STANDARD GRATE**  
**FREE AREA = 19.9 IN<sup>2</sup>**  
**MEETS ADA AND HEEL-PROOF REQMT.**

**OPTIONS:**

\*Modified drain options are non-cancellable and non-returnable

-PFO*	Outlet for SS Push-Fit pipe
-FB	Filter basket
-SB	Sediment bucket
-VP*	Secured grate
-SO	Side outlet
-50*	1/2" primer tap
-T*	Threaded outlet
-316*	Type 316L material
-BW*	Butt-weld outlet (spec. 10, 40, 80)
-DB	Dome bottom strainer
-WH*	Weepholes (with -F or -CF only)

-F*	Flange
-CF*	Clamp and flange
-NG	No grate
-HG	Perf. Half grate
-3Q	Perf. 3/4 grate
-MG	Mesh, anti-slip grate
-LG	Ladder grate
-SG	Perimeter slot grate
-SK	Sealed cover w/eyebolt key
-SV	Sealed cover w/vacuum handle

Model	Pipe size
42552	2"
42553	3"
42554	4"
42556	6"

\*\*3.75 [95] for 6" outlet

Josam product specifications in U.S. customary units are approximate and provided for reference only. For precise measurements, please contact Josam Technical Support. Josam reserves the right to change or modify product design, construction, specifications, or materials without prior notice and without incurring any obligation to make such changes and modifications on Josam products previously or subsequently sold.

**Notes:**

**A WATTS Brand**