

SHOCK ABSORBERS

ABSORBOTRON® Sizes & Fixture-Unit Ratings

The proper size of ABSORBOTRON® units can be determined for one or more fixtures on the basis of the Fixture-Unit values as shown in the tables below.

The JOSAM Fixture-Unit Sizing Method established in accordance with Plumbing and Drainage Institute "Standard P.D.I.-WH201" provides a simple and accurate method of determining the size of ABSORBOTRON® required for each plumbing fixture supply branch, and automatically takes into consideration all of the factors which must be considered or otherwise calculated.

To determine the size of ABSORBOTRON® required by this easy method, simply refer to the Fixture-Unit Rating of each fixture on the cold or hot water lines. Add the total number of cold or hot water fixture-units on each line and use this total to select the proper ABSORBOTRON®, as shown in the Selector Chart.

This method provides less chance of error since all facts required for selection are known. It is the method preferred by engineers.

FIXTURE-UNIT RATING TABLE					
Fixture	Type of Supply Control	CAPACITY IN FIXTURE-UNITS			
		Public		Private	
		C. W.	H. W.	C. W.	H. W.
Water Closet	Flush Valve	10	-	6	-
Water Closet	Flush Tank	5	-	3	-
Pedestal Urinal	Flush Valve	10	-	-	-
Stall or Wall Urinal	Flush Valve	5	-	-	-
Stall or Wall Urinal	Flush Tank	3	-	-	-
Lavatory	Faucet	1-1/2	1-1/2	1	1
Bathtub	Faucet	2	3	1-1/2	1-1/2
Shower Head	Mixing Valve	2	3	1	2
Bathroom Group	Flush Valve Closet	-	-	8	3
Bathroom Group	Flush Tank Closet	-	-	6	3
Separate Shower	Mixing Valve	-	-	1	2
Service Sink	Faucet	3	3	-	-
Laundry Tubs (1-3)	Faucet	-	-	3	3
Combination Fixture	Faucet	-	-	3	3

SELECTOR CHART

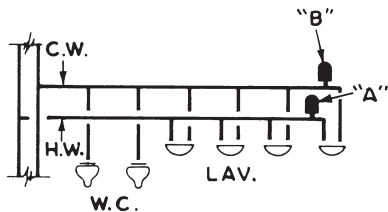
TABLE IV

ABSORBOTRON® TYPE NO.	75000-S	† 75001A † 75001-S	† 75002B † 75002-S	† 75003C † 75003-S	† 75004D † 75004-S	† 75005E † 75005-S	† 75006F † 75006-S
P.D.I. SYMBOLS †	AA	A	B	C	D	E	F
Fixture-Unit Rating	1	1-11	12-32	33-60	61-113	114-154	155-330

† Meet P.D.I. Standard WH-201 and A.S.S.E. Standard 1010. Certificate of Compliance available on request.

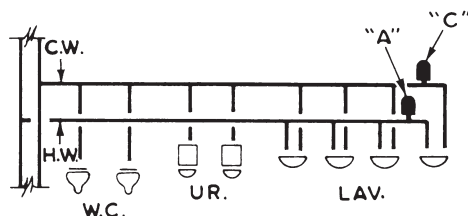
EXAMPLE

For purpose of example, the following applications are offered. Branch line control valves are not shown. ▲



EXAMPLE 1

COLD WATER BRANCH = 26 F. U. =
JOSAM Type No. 75002B ABSORBOTRON®
HOT WATER BRANCH = 6 F. U. =
JOSAM Type No. 75001A ABSORBOTRON®



EXAMPLE 2

COLD WATER BRANCH = 36 F. U. =
JOSAM Type No. 75003C ABSORBOTRON®
HOT WATER BRANCH = 6 F. U. =
JOSAM Type No. 75001A ABSORBOTRON®

SPECIAL APPLICATIONS

The JOSAM Engineering Department will assist you with respect to any special water hammer problems. When submitting your request, please include the following information, if possible.

1. Type of equipment or fixtures to be served
2. Schematic sketch of piping system
3. Size of pipe used
4. Water pressure
5. Velocity of water flow through piping (if known)

▲ Pressure Reducing Valves should be installed on branch lines serving fixtures and equipment, when the pressure in the line exceeds 60 p.s.i. Most fixtures and equipment are designed to function at pressures ranging between 20 p.s.i. and 50 p.s.i. For quiet flow of water in the piping, it is recommended that a velocity between 5-8 feet per second be maintained.